



Instructions

GENERAL NOTES:

- These instructions are also available on our website; www.polyperformance.com. Check the website before you begin for any updated instructions and additional photos for your reference.
- The installation of this skid plate assembly requires minor cutting, drilling and tapping of threaded holes.
- You have the option to use the factory hex head bolts in the factory skid plate holes or to drill and tap them and use the supplied flat head allen head bolts.
- You will need a 29/64 drill bit and 1/2-20 UNF tap, also a grinder with a cutoff wheel or sawzall and a 7/16" drill bit.
- This skid plate assembly is designed to be used as complete assembly using none of the factory skid plates or cross member.

1. Remove the skid plates, one covering the transfer case and one covering the automatic transmission if equipped.
2. If you are going to drill and tap for the flat head allen bolts, you should do this now. There are a total of 6, just tap the 4 that secured the skid plates for now. There are two along the bottom of the driver frame rail, one on the passenger side, and one in the gas tank skid plate. Drill to 29/64 and tap to 1/2-20 UNF.
3. Using a grinder with a cut off wheel or sawzall, cut 3" off the front of the gas tank skid plate where it attached to the stock crossmember. The line in the photo below is where to cut.



Instructions

4. Remove the 3 nuts securing the transmission mount to the transmission crossmember.
5. Jack up the transfer case to take any load off the transmission mount and support with a jack stand.
6. Remove the (2) horizontal thru bolts on each side of the transmission crossmember and remove the crossmember.
7. Install the new crossmember skid plate using the original thru bolts in the sides. Insert the bolts from the back to the front. Make sure the transmission mounting studs are aligned in the corresponding holes in the crossmember skid plate and the gas tank skid plate is on top of the crossmember skid plate. Reposition the jack to the center of the skid plate to push the skid plate up against the bottom of the frame.. Do not tighten these bolts yet.



8. Install the supplied flat head allen bolts or the original skid plate bolts in the front corners of crossmember skid plate. You may need to use an alignment bar to align the skid plate holes with the frame holes. Tighten these bolts to 35 ft-lbs. We recommend using antiseize on all of the flat head allen bolts for easy future removal.
9. Tighten the factory cross member mounting bolts to 35 ft-lbs. Tighten the transmission mounting bolts to 35 ft-lbs
10. Drill and tap the frame for the rear crossmember skid plate holes using the hole as a guide.

Instructions

11. Using a 7/16 drill, drill the gas tank skid plate for the two countersunk mounting bolts in the crossmember skid plate, install the two 3/8 flat head allen bolts with the flange nuts and tighten to 20 ft-lbs



REAR T-CASE SKID PLATE

12. You can now install the rear transfer case skid plate, install the skid plate on top of the crossmember skid plate. If you drilled and tapped the gas tank and rear frame hole to 1/2-20 use the supplied flat head allen bolts, if not us the original bolts, tighten to 35 ft-lbs.



Instructions

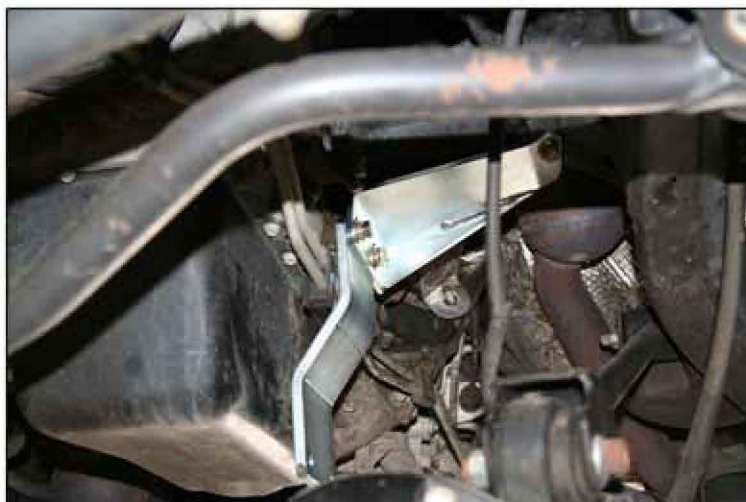
13. Install the 3 center $\frac{1}{2}$ " flat head allen bolts with the flange nuts and tighten to 35 ft-lbs.

FRONT ENGINE SKID PLATE

14. Loosen the driver side engine mounting bolt and tap rearward with a hammer. Slide the engine mount frame bracket under the bolt as shown. Attach the bottom of the bracket with a $\frac{3}{8}$ " bolt, washer and flange nut. Tighten the $\frac{3}{8}$ " bolt to 20 ft-lbs and then tighten the engine mount bolt to 45 ft-lbs.

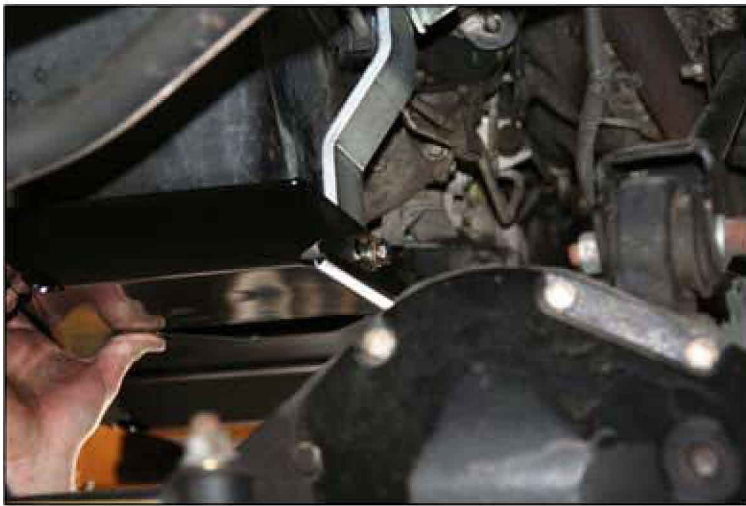


15. Install the driver side frame brace to the frame bracket; the driver side is the shorter of the two. There is no top or bottom and can be installed in either direction. Use the supplied $\frac{3}{8}$ bolts, flat washers and lock washers. Leave these bolts loose until all the other pieces are installed.

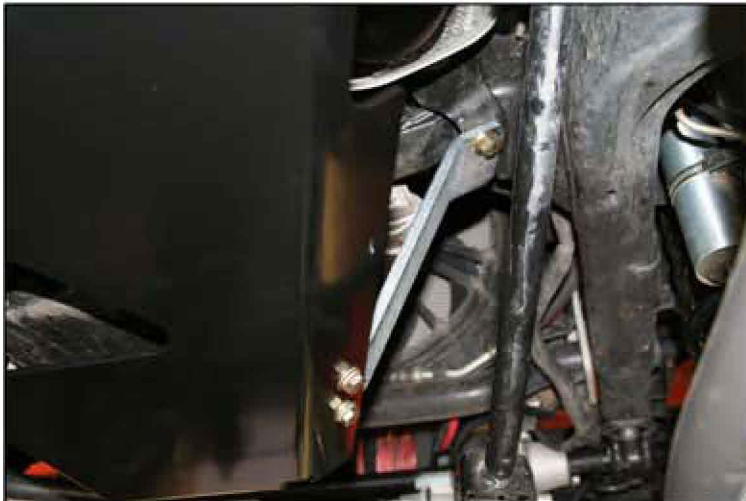


Instructions

16. Install the front engine skid plate, put the rear on top of the crossmember skid plate and attach the front to the driver side frame brace. Using the $\frac{1}{2}$ " flat head allen bolts and flange nuts, attach the rear of the engine skid to the front of the crossmember skid. Do not tighten these bolts yet; leave them loose until both of the front brackets are installed.



17. Install the passenger side frame brace as shown with the larger hole to the top. Use a $\frac{1}{2}$ " bolt with a flat washer and flange nut on the top and two $\frac{3}{8}$ " bolts with a lock nut and flat washer on the bottom.



18. Adjust the side to side position of the front engine skid and tighten all the mounting bolts. Tighten the $\frac{3}{8}$ " bolts to 20 ft-lbs and the $\frac{1}{2}$ " bolts to 35 ft-lbs.

Included Components

5710-01 Crossemer Skid Plate Hardware

Qty	Description
4	<i>1/2"-20 x 1" Flat Head Socket Cap Screw</i>

5710-02 Transfer Case Skid Plate Hardware

Qty	Description
5	<i>1/2"-20 x 1" Flat Head Socket Cap Screw</i>
5	<i>1/2"-20 Flange Nut Serrated</i>

5710-03 Oil Pan Skid Plate

Qty	Description
3	<i>1/2"-20 Flange Nut Serrated</i>
2	<i>1/2"-20 x 1" Flat Head Socket Cap Screw</i>
1	<i>1/2"-20 x 1" GR8 Hex Cap Screw</i>
1	<i>1/2" SAE High Strength Washer</i>
7	<i>3/8"-16 x 7/8" GR8 Hex Cap Screw</i>
1	<i>3/8"-16 Flange Nut Serrated</i>
7	<i>3/8" SAE High Strength Washer</i>
7	<i>3/8" GR8 Lock Washer</i>
1	<i>Engine Frame Brace Passenger Side</i>
1	<i>Engine Frame Bracket Passenger Side</i>
1	<i>Engine Frame Bracket Driver Side</i>

